

## Loop Walk from Victoria Park

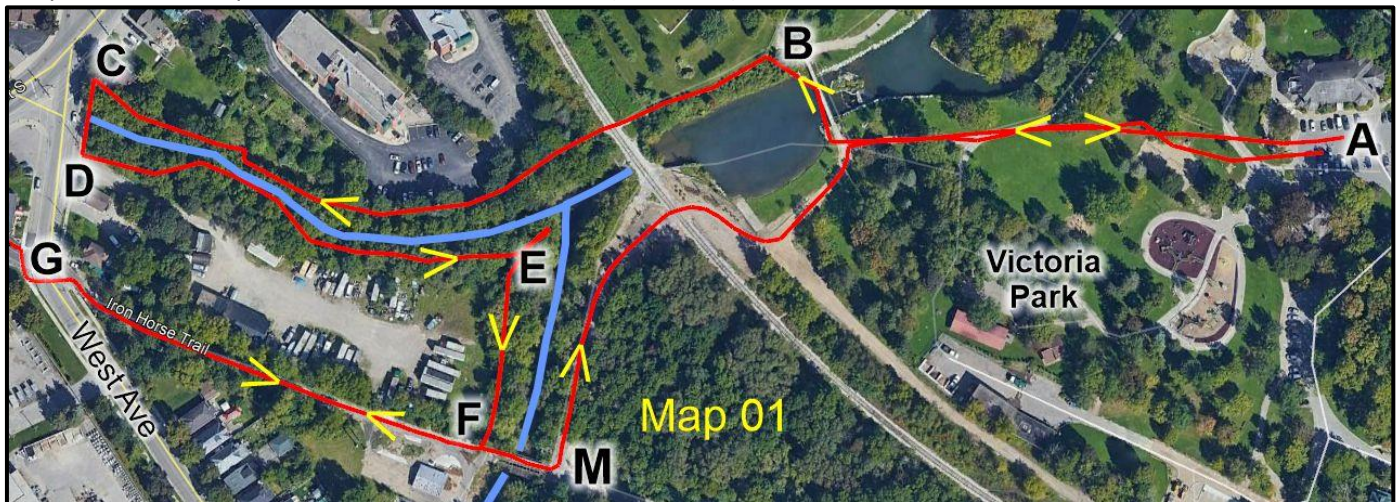
2021MAR14

The maps below are intended to be used in conjunction with information, including free GPX and KML tracks, located at [hember.ca/hikes/LoopWalkFromVictoriaPark.html](http://hember.ca/hikes/LoopWalkFromVictoriaPark.html). Be sure to read the web page entitled Strange Street Aboriginal Settlement ([hember.ca/hikes/StrangeStreet.html](http://hember.ca/hikes/StrangeStreet.html)) before doing this walk.

Map showing whole loop walk.

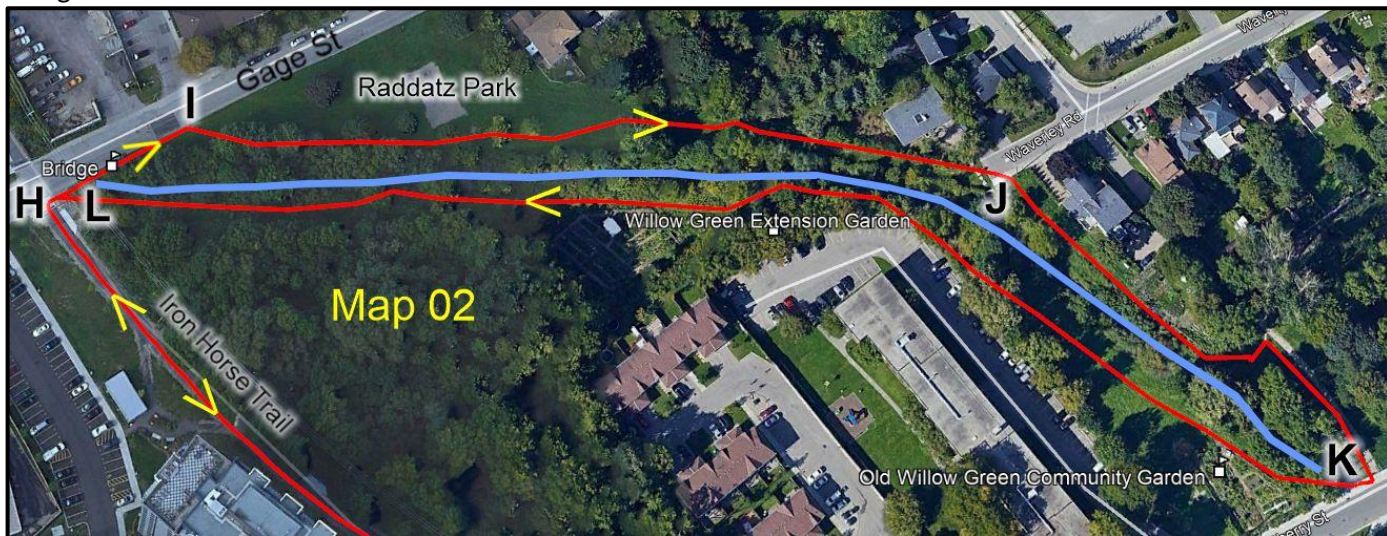


Map 01: Follow sequence A > B > C > D > E > F > G (West Ave).



The creek between F & M is the Henry Sturm Creek. Water in it flows from the Forest Heights/Monarch Woods/Resurrection High School areas. If you walk close to the edge of the water at position E, you can see the confluence of Henry Sturm Creek with Westmount Creek (formerly Schneider Creek). After the waters in these two creeks merge, the creek is known as Schneider Creek and flows into Victoria Lake [see \* page 2].

Map 02: Follow sequence H > I > J > K > L > H > G > F continue over bridge to M, left & back to park. There is a bridge on the Iron Horse Trail between F and M.



\* Note: The information below is about Schneider Creek beyond Victoria Park and has nothing to do with the loop walk being described.

Schneider Creek continues through Victoria Park and under Queen Street to Upper Doon. In Upper Doon, water in Strasburg Creek (coming from the [Huron Natural Area](#)) joins Schneider Creek. Schneider Creek continues through Lower Doon where the water enters the Grand River.

At about [43.39402266384835](#), [-80.41644738805114](#) is the Doon Mills Ruins. In 1839, Adam Ferrie Jr. dammed Schneider's Creek here close to Grand River. The resulting millpond, Willow Lake, powered an industrial complex including a gristmill. Fire destroyed the mill in 1913. The ruins collapsed in the 1960s, and a flood washed out the dam.

Such waterways, and trails associated with them, were used extensively by indigenous groups.

Source: [hember.ca](http://hember.ca)